

REDLAMP

RL VT30 TUBE LED WALL

-SINCE 2003-

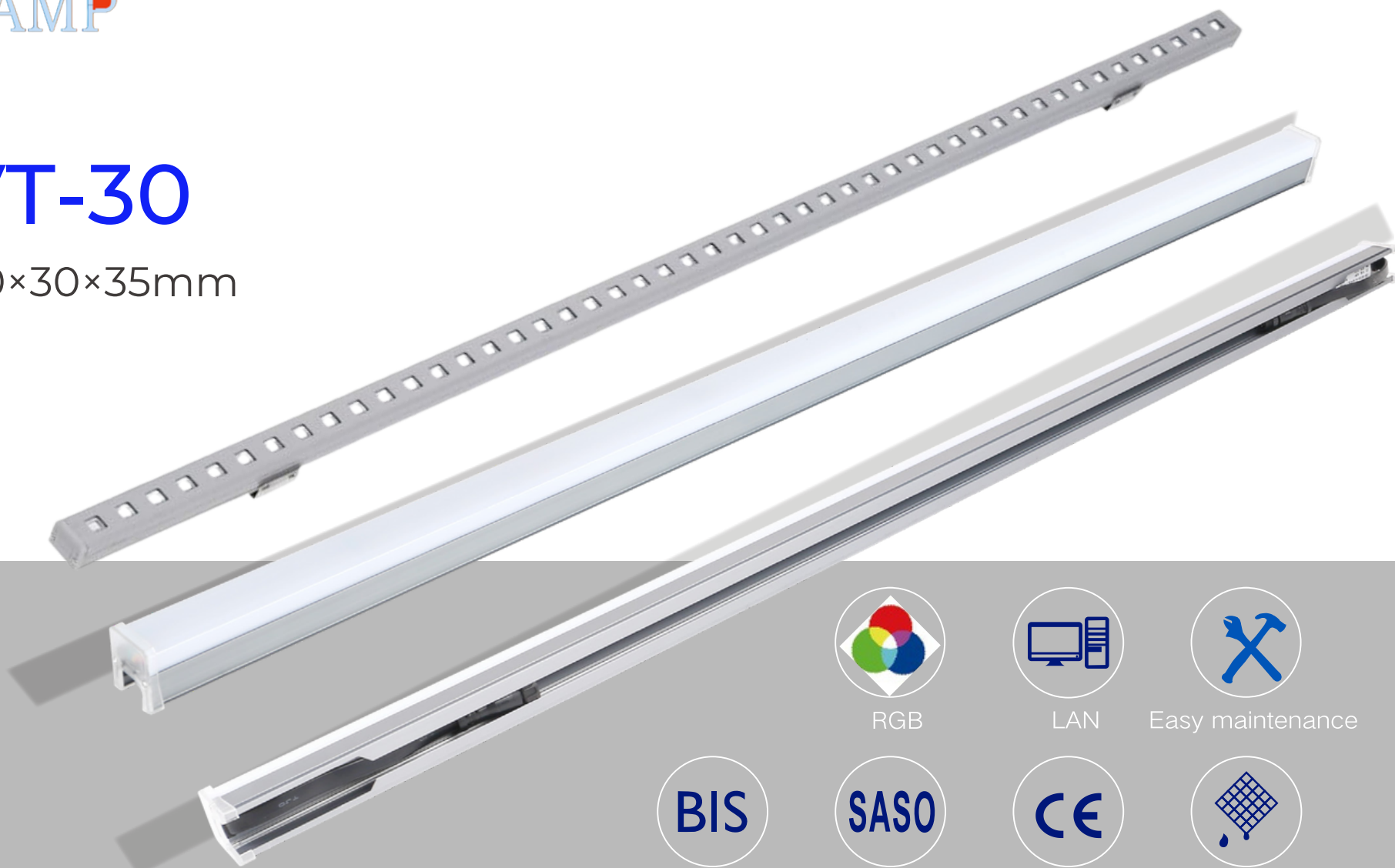
I L L U M I N A T E Y O U R W O R L D



REDLAMP

RL VT-30

size: 1000×30×35mm



RGB



LAN



Easy maintenance



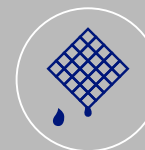
BIS



SASO



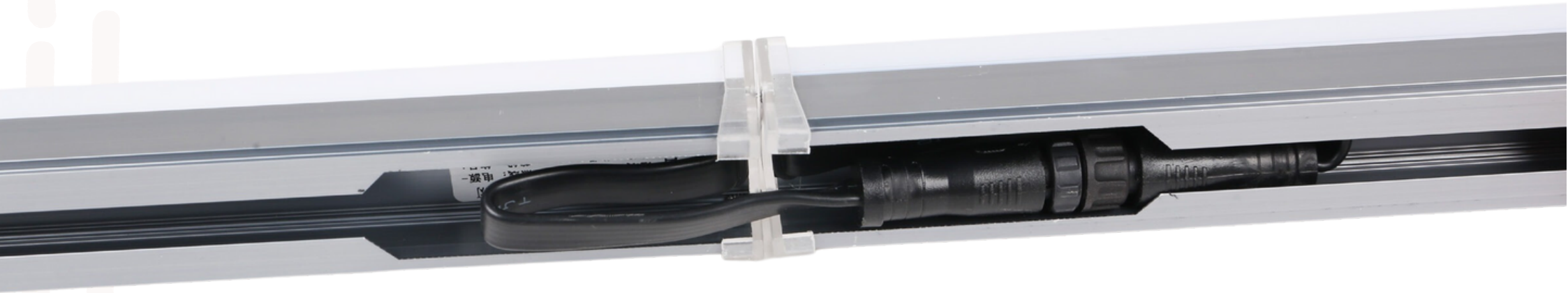
CE



IP65

ILLUMINATE YOUR WORLD. ...

REDLAMP



Smart Connection

Quick connection
Hidden wire design

ILLUMINATE YOUR WORLD

OSRAM chip LED

High brightness,
Better Stability,
Low power
consumption, Long life



High Weather Resistance

- Aluminum alloy shell.
- Corrosion-resistant.
- Frosted anti-UV PC cover.
- High-quality heat resistance.



Waterproof connector

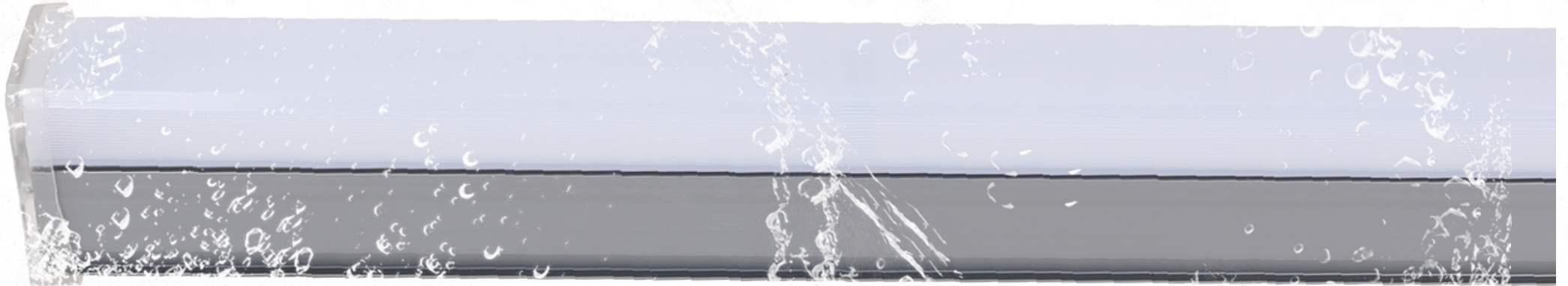
Threaded waterproof connector to ensure proper connection and waterproof compliance.



REDLAMP

Waterproof Body

IP 66 water proof performance



ILLUMINATE YOUR WORLD

DMX Connector

Support DMX signal for outdoor lighting of various linear products can be combined into a large screen to achieve video effect .



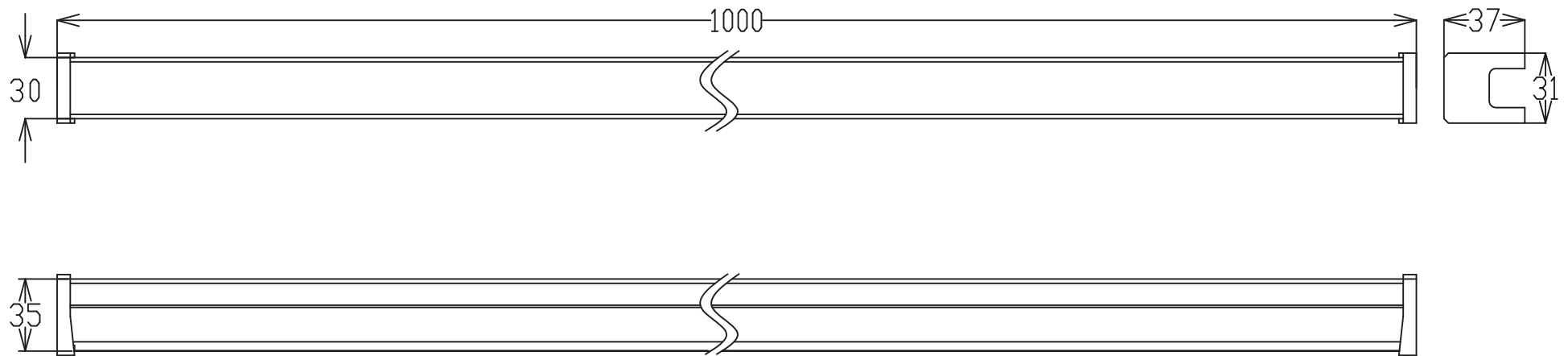
REDLAMP



The perfect choice for outdoor lighting & Video effects projects

ILLUMINATE YOUR WORLD. ...

Dimension



(Unit: mm)

REDLAMP

Model	RGB
Dimension	1000×30×35MM
LED Standard	SMD5050
LED Quantity	48 PCS
Number of Channels	24
Luminous Flux	7.2 LM / Lamp
Max Power(W)	12W
Input Voltage	DC24V
Weight (KG)	0.35KG
Viewing Angle	140°
Crust Material	Aluminum alloy & PVC
Display Color	RGB
Protection Level	IP66
Working Temperature	-40~60°C
Life Span	≥50000 Hours
Control Mode	DMX

ILLUMINATE YOUR WORLD.. ...