

REDLAMP

Ultra-thin

FINE PIXEL PITCH LED SCREEN

FINE PIXEL PITCH LED SCREEN

REDLAMP-Ultra Thin Series

28^{mm} Thickness

4.2 Kg

Designed for small pixels solution applications, it can deliver crystal clear images and vibrant colors, capturing audience's attention and creating unforgettable visual experience.



HD



High
Grayscale



Quick
Installation



Super wide
Viewing Angle



Easy To
Maintain



Seamless
Stitching



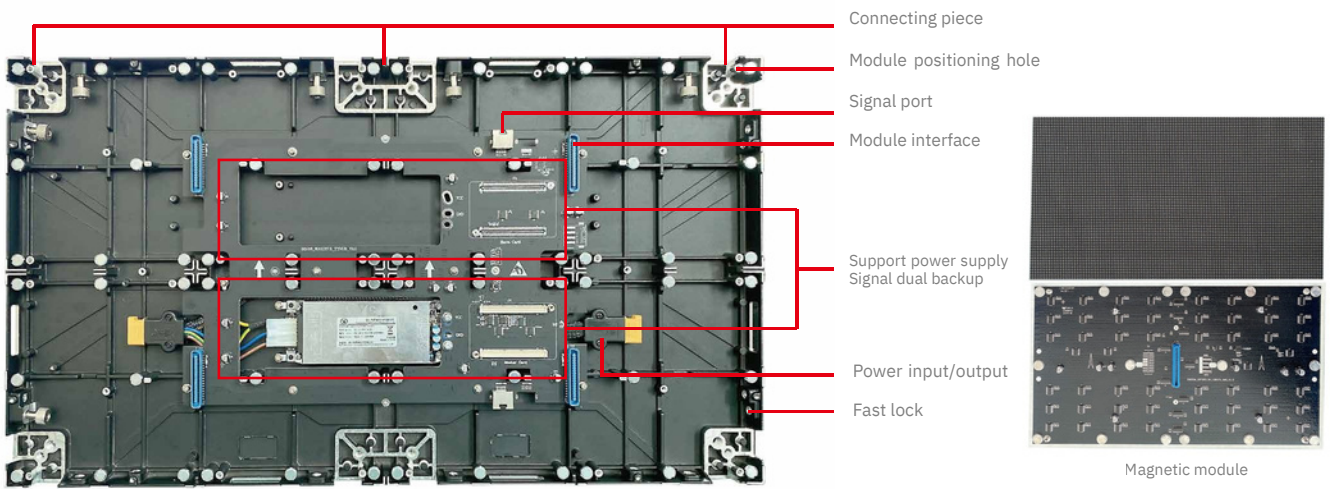
Magnetic
Adsorption



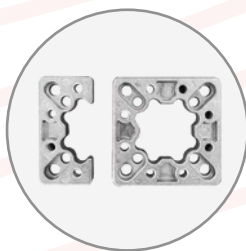
Low Power
Consumption

600*337.5mm DIE-CAST ALUMINUM

- Support signal and power supply dual backup.
- Support the full front maintenance.
- Using wireless hard connection methods.

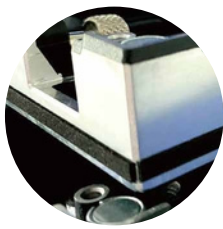


● Cabinet accessory

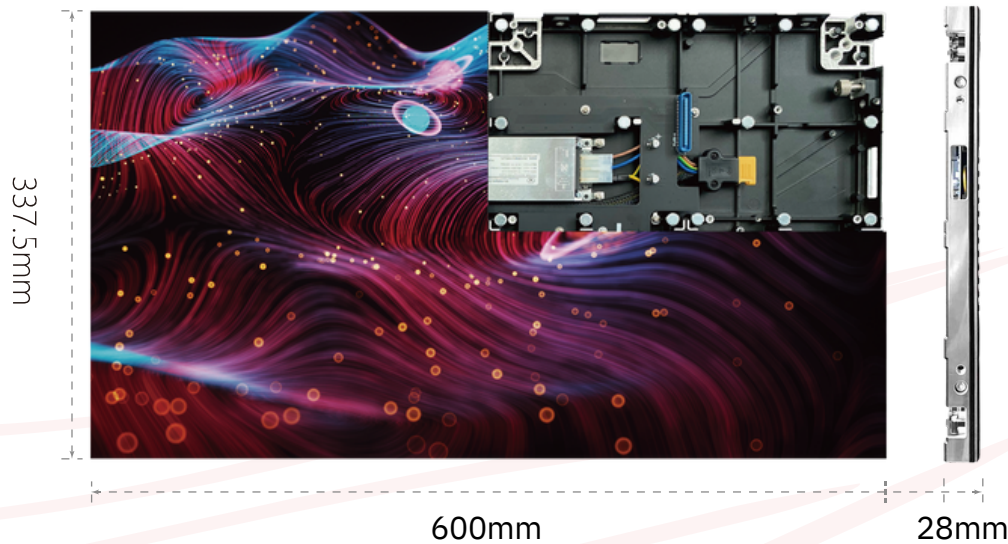
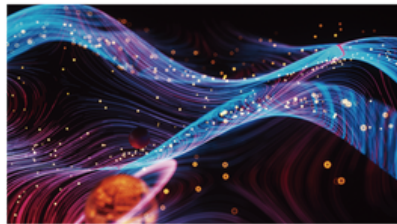


ULTRA SLIM, PURE FRONT MAINTENANCE

- Ultra-light and thin design, the weight of the cabinet is 3.9kg. the thickness of the cabinet is only 28mm (excluding module).
- The installation accuracy is upgraded, and the cabinet increases the sideways, no light leakage, high accuracy can be seamlessly spliced.



Sideline shading strip



- Using high refresh rate, the picture quality is stunning and shocking, and meets the requirements of cameras shooting and photography.



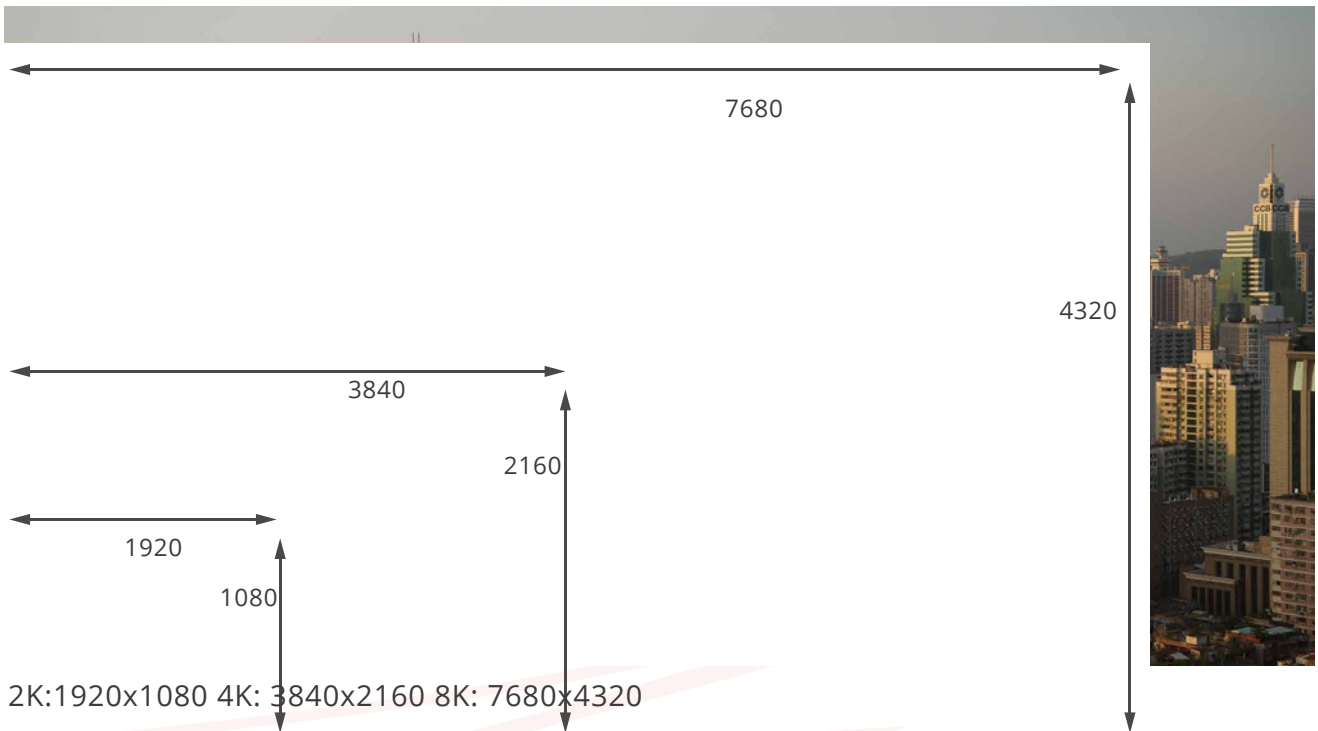
High refresh, No scanning lines visible



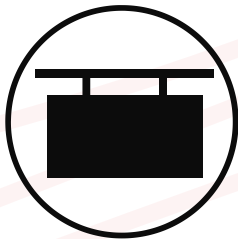
Low refresh, scanning lines occur

16:9 PERFECT SIZING

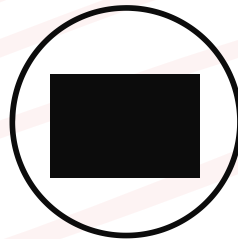
- Standardized aspect ratio is ideal for perfect views.
- The 16:9 ratio can be perfectly matched for mainstream videos and other content sources without any distortion



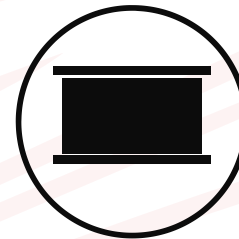
- Support different types of installation methods



Hanging installation method



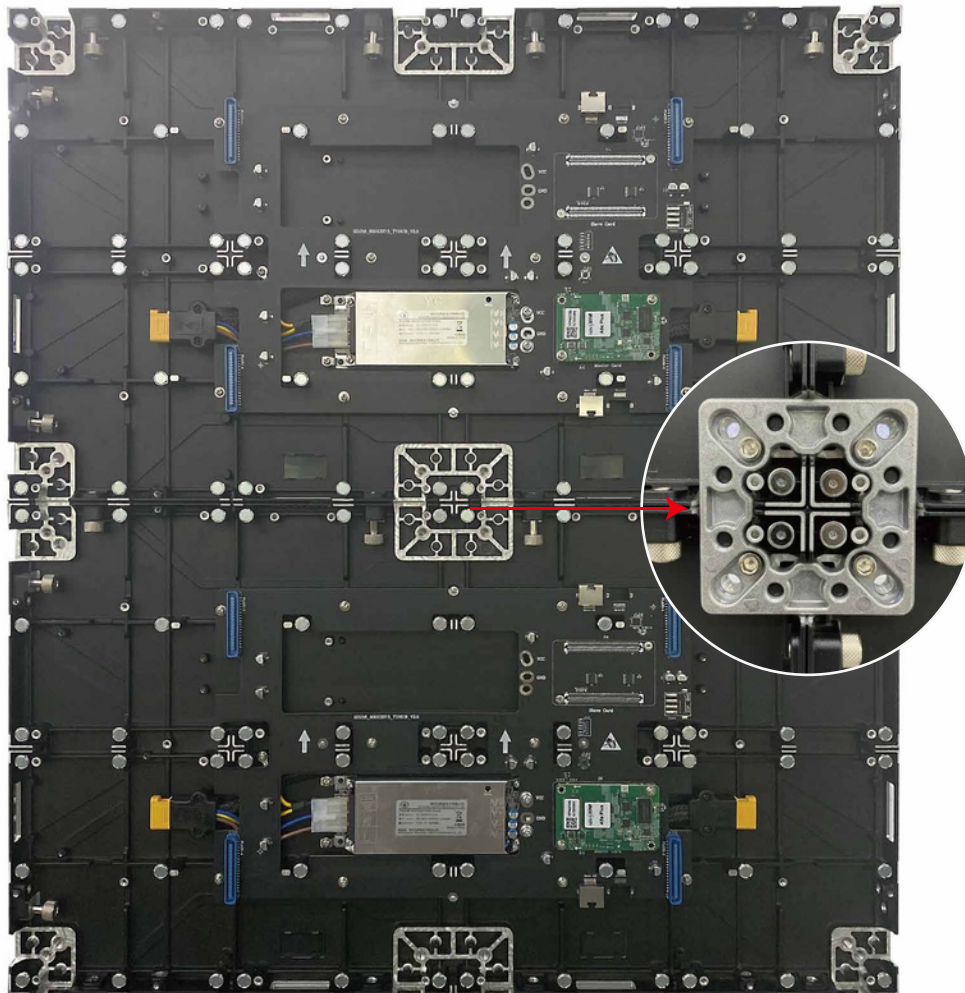
Ground installation



Wall-mounted installation method

HIGH RELIABILITY

- Designed for small pixels solution applications, it can deliver crystal clear images and vibrant colors, capturing audience's attention and creating an unforgettable visual experience.
- Locating pins and die-cast aluminum structure to ensure the excellent alignment and joints of cabinets.



Technical Parameters

Pixel Pitch	0.9375mm	1.25mm	1.44mm	1.5625mm	1.875mm	2.34mm
Pixel Structure	1R1G1B	1R1G1B	1R1G1B	1R1G1B	1R1G1B	1R1G1B
Pixel Density	1137777/m ²	640000/m ²	480716/m ²	409600/m ²	284444/m ²	182044/m ²
Module Resolution	320X180 dots	240X135 dots	208X117 dots	192X108 dots	160X90 dots	128X72 dots
Module Size (WXH)	300X168.75mm	300X168.75mm	300X168.75mm	300X168.75mm	300X168.75mm	300X168.75mm
White Balance Brightness	900cd/m ²	900cd/m ²	900cd/m ²	900cd/m ²	900cd/m ²	900cd/m ²
Color Temperature	2000K—12500K	2000K—12500K	2000K—12500K	2000K—12500K	2000K—12500K	2000K—12500K
Horizontal Viewing Angle	≥160°	≥160°	≥160°	≥160°	≥160°	≥160°
Vertical Viewing Angle	≥140°	≥140°	≥140°	≥140°	≥140°	≥140°
Optimal Viewing Distance	≥1 m	≥1 m	≥1 m	≥1 m	≥1 m	≥2 m
Contrast	≥5000:1	≥5000:1	≥5000:1	≥5000:1	≥5000:1	≥5000:1
Grayscale	12-14Bit	12-14Bit	12-14Bit	12-14Bit	12-14Bit	12-14Bit
Refresh rate	≥3840HZ	≥3840HZ	≥3840HZ	≥3840HZ	≥3840HZ	≥3840HZ
Continuous Working Time	≥72H	≥72H	≥72H	≥72H	≥72H	≥72H
Life Span	100, 000 H	100, 000 H	100, 000 H	100, 000 H	100, 000 H	100, 000 H
Operating Voltage	DC 4.2-5V	DC 4.2-5V	DC 4.2-5V	DC 4.2-5V	DC 4.2-5V	DC 4.2-5V
Maximum Power Consumption	680W/m ²	680W/m ²	680W/m ²	680W/m ²	680W/m ²	680W/m ²
Average Power Consumption	260W/m ²	260W/m ²	260W/m ²	260W/m ²	260W/m ²	260W/m ²

REDLAMP LED

The Building C,

Tangtou Industrial Park,

Shiyan Town, Boan District, Shenzhen

www.redlamped.com